

## Technical specification

### 1.8m ECO Solvent Series

#### Printing Technology

Print Head	Drop On Demand Piezoelectric Head
No. of print head	1-4

#### Productivity

No. of print head	DX5		
	1	2	4
Express	32 sqm/h	65 sqm/h	130 sqm/h
Production	22 sqm/h	44 sqm/h	90 sqm/h
Quality	17 sqm/h	34 sqm/h	70 sqm/h
Fine Art	12 sqm/h	24 sqm/h	50 sqm/h

#### Resolution & Software

Resolutions	2880dpi Max.
Software	Standard (Maintop/photoprint) ; Onyx, Caldera, Neostampa available as optional

#### Media

Media Width	Maximum 1920mm
Roll diamention & Weight	Max. 420mm, 100KG
Print Width	1880mm in one roll; 2 rolls 914mm together
Feeding&Taking-upSystem	Industrial Auto-Feeding&taking-up system with dual rolls printing support

#### Inks

Type	Eco Solvent / Water Base
Ink Supply System	1.5L Large Bulk System with automatic supply system
Colors	Standard CMYK; Others Configuration Optional
Ink curing system	Integrated Tri-Heating System, Extend infrared heating and cooling system

#### Dimensions & Weight

Machine(L*W*H)	X2(2722×615×1223mm)	X3S(3260×930×1800mm)	X4(3260×930×1800mm)
Package(L*W*H)	X2(2860×760×650mm)	X3S(3900×760×1012mm)	X4(3710×750×850mm)

#### Operation Requirements

#### Warranty

XENONS®

## 1.8m ECO Solvent Series

X2-740/X4-740/X3S-740

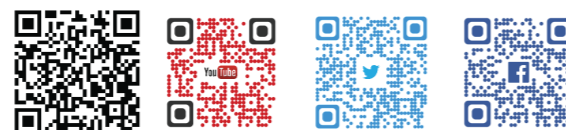
**Large-format** Printer for  
Eco-Solvent/Water base

Quality deliver.Easier!



### Key Features

- ▶ Advanced Media System for long unattended print runs
- ▶ Print Banners, posters, wraps, signs and more with precision and ease
- ▶ Integrated tri-heater System plus extended infrared auto-drying and cooling System for fast drying
- ▶ Integrated Auto-Print head Maintenance System for ease operation
- ▶ Customized Print head Configuration for 6 color CMYKKYMC or others for higher quality
- ▶ 2880dpi max. Resolution
- ▶ 130sqm/h max. speed
- ▶ Optical Fiber Data Transmits System Plus USB 3.0 high speed interface offer a stable and faster prints



# 1.8m ECO Solvent Series



X2

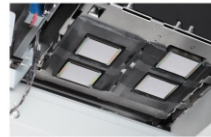


X3S

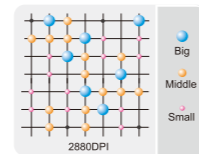


X4

### Four Staggered Print Heads



With four staggered print heads and an industrial design, the printer delivers quality prints with high speed. It meets high volume customer requirement.



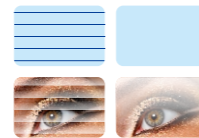
### VSDT Printing Technology

YILIJET's original VSDT technology delivers a ultra high quality prints with drop dots from 2.5pl to 27pl

### Fiber optic transition system



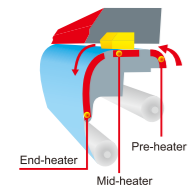
A 1.25G/s data processing capacity, more than enough any resolution image prints. The fiber optic system also has an anti-interference ability, which can make sure the stability during high speed output.



### Reduce Banding

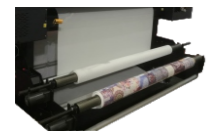
Efficient feather/wave function help to reduce the printing banding.

### Heating & Cooling system



Make sure a high speed and stable output, X4-4H series printer was designed with multi-heating and cooling System. All the temperature has its individual controller, the infrared heating system was intelligent on and off according to the printing status.

### Heavy Duty Feeding and Taking Up System



Fastest prints with its heavy duty feeding and taking, biggest roller dimensions up to 420mm, use your bigger roller to lower your attention during printing.

### More Ink supported

This printer support eco-solvent/water base/dye sublimation inks. Support a multi application solutions Rigid New Industrial Design A well design with selected precision and reliable parts. Dual integrated motors for the motion

### Easy to access any PCBs and maintenance section

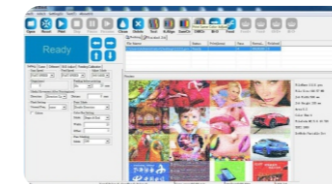
Every maintenance section has an easy door to access.



### Large capacity bulk system

New 1 Liter bulk system save you more time and ensure continues printing.

## Functional & Durability



### Individual head cleaning system

In this printer, you can clean any of the two heads separately by click the button on GUI.

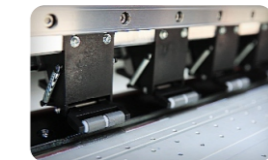
### Preview of the printing job

The GUI support a preview for the printing task, including all the printing information.

### Customized color sequence

Normally the color sequence was set in factory, while this printer support a customized adjustment for that.

## Safety & Low-maintenance



### Automatic Print head Maintenance System

The station was designed and assembled with high precision and selected parts. It can automatically process print head capping, ink suction, and head wiping, Ensure an easy maintenance and durable printing

### Anti-crash system

Better safe than sorry, this anti-crash system protect heads from damage by wrong operation.

