



CONVENIENT, RELIABLE LABEL PRINTING  
SYSTEM FOR RELIABLE PROFITABILITY



## digital die-cutting Pro

# any-BLADE

Convenient Blade Die-cutter

### Labels can be cut without retooling

Without retooling and stock holding for the die, the label can be cut on demand and to any size.

### No need for professional technicians

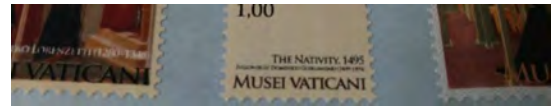
It is simple and easy to operate the equipment. You don't need to be a professional technician to operate this machine!

### Time and costs effective by multi-task performance

It gives you one-stop solution for laminating, matrix removal and slitting simultaneously. Completed labels can be easily wound with two rewinders.

### Office usable size

It can be installed in an office and cutting can be done whenever necessary.



### Impressive precision registration allows the user to cut high-quality labels quickly

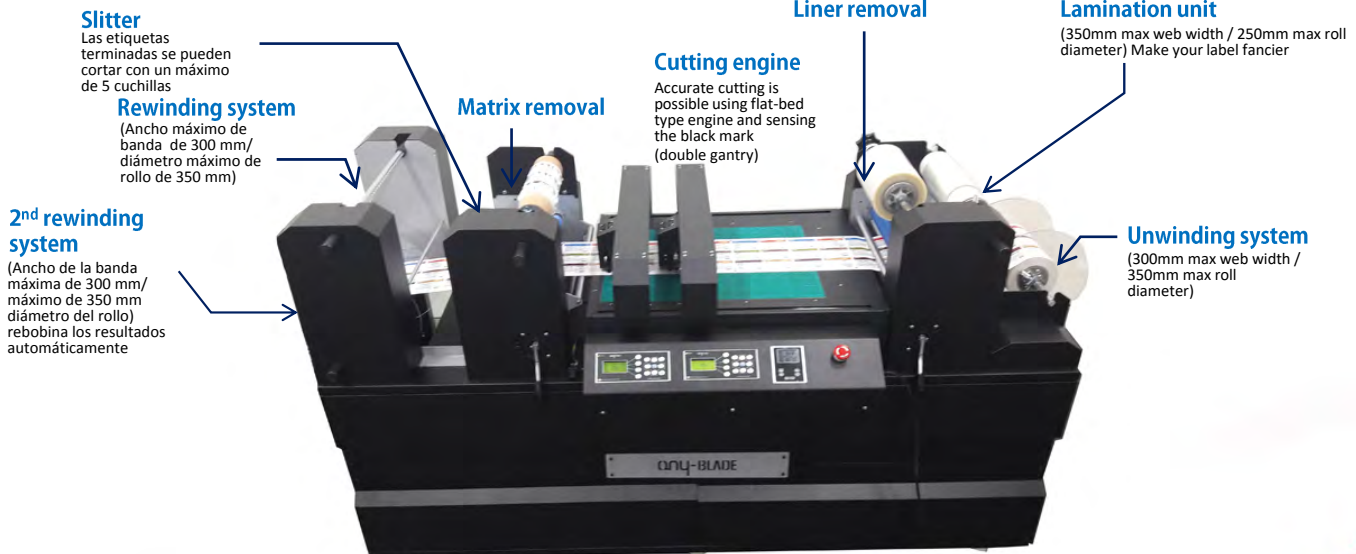
It detects up to 4 black marks to provide reliable registration and avoid any synchronization issues. It also can produce short-run labels for in-house use or deliveries in a short lead time.

### Customer-oriented design for maximum user satisfaction

According to the user's requirements and needs, the equipment can be flexibly transformed. Each modularized part of the rewriter unit, lamination unit and slitter can be assembled and added for an all-in-one process.

### Various materials can be supported

It cuts various materials such as paper, film and even metallic materials!





CONVENIENT, RELIABLE LABEL PRINTING  
SYSTEM FOR RELIABLE PROFITABILITY



# any-BLADE

*Doble velocidad por Dual Gantry,  
sin tener en cuenta la duplicación del diseño  
(Cabezal doble requiere diseños duplicados en  
cada columna)*

## Specifications

-  **Max web width : 350mm**
  - Up to 350mm media width is accepted.
-  **Max roll diameter : 350 mm**
  - Up to 350mm diameter media roll is accepted.
-  **Width 350x length 550mm**
  - It cuts various sized of labels at once.
-  **Various label material support**
  - It cuts paper, film and even metallic materials.
-  **Cutting accuracy : Below 0.2mm**
  - The flat bed type engine ensures the least cutting errors.
-  **Exclusive software**
  - It supports easy operating and cutting by using the exclusive software
-  **Dimension : D1918 x W1015 x H735 mm / 200 kg**
  - Office usable size
-  **Power supply : 100-220v**



[www.anytronlabel.com](http://www.anytronlabel.com)



**IMPRECOP**  
EQUIPOS PARA GRÁFICA DIGITAL

Importa, vende y garantiza Imprecop S.R.L.  
Carlos Calvo 1192, Capital Federal (Buenos Aires - Rep. Argentina) Tel. (+54) 011 2066-2330.  
Email. [soporte@imprecop.com.ar](mailto:soporte@imprecop.com.ar) / [info@imprecop.com.ar](mailto:info@imprecop.com.ar)