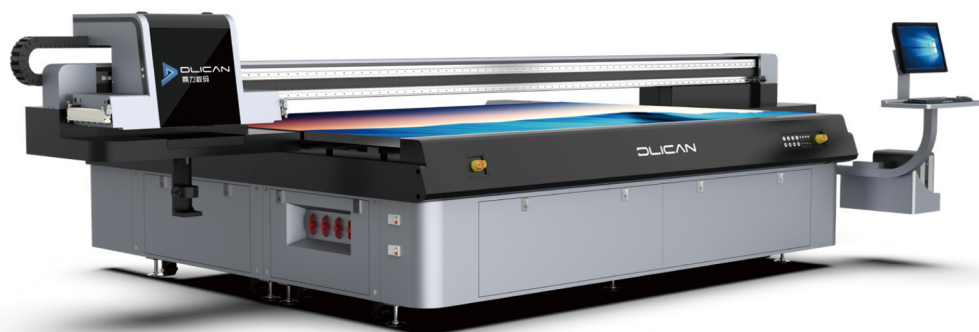
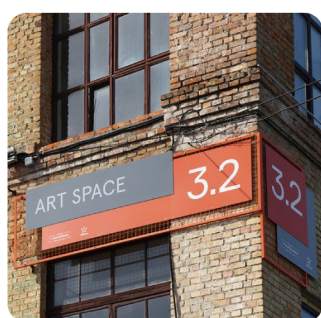


UV FLATBED PRINTER SERIES

DLI-3220



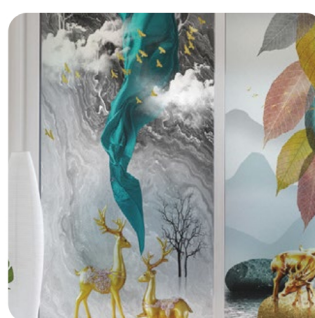
Application industry



signage



Electrical panel



Glass door



bath mat

Technical Parameters

Mode of Equipment	DLI-3220	Printing Size	3200*2000mm
Print head type	Ricoh G5 /RicohG6	Print head quantity	2-8(can be customized)
Printing color	CMYK+LCLM+W+V(Support a variety of color combinations)	Printing Precision	720*900DPI/720*1200DPI/720*1800DPI
Printing Height	0-100mm(can be customized)	File format	TIFF(RGB&CMYK)BMP、PDF、EPS、JPEG、etc.
RIP software	ColorGATE RIP、Photo print、Reprint、etc.	Operation Environment	Temperature:20°C-30°C/Humidity:40-70%
Printer Dimension	5394mm*2953mm*1500mm	Power requirements	AC220V(±10%); 50HZ;P:10000W
Printer Weight	2360KG (weights are different from different configurations)	Driver Software	Microsoft Windows 10 pro
Data interface	High speed USB transfer interface/Gigabit network interface		
Ink System	Continuous ink supply/ink tank 2000ml/subtank constant temperature and pressure/white auto stirring		
Lifting function	Carriage auto electrical height adjustment/Manual intelligent carriage height adjustment		

Printing Speed	4PASS	6PASS	8PASS
Single row Gen5 printhead	24m ² /h	15m ² /h	12m ² /h
Single Gen6 maglev	34m ² /h	23m ² /h	19m ² /h
Double row Gen 5	42m ² /h	30m ² /h	21m ² /h
Double row gen6 maglev	52m ² /h	39m ² /h	33m ² /h

*Configuration scheme: Single row: 2-6 heads | Double row: 4-12 heads | Print mode: Bi-dir print, gradient feather



SISTEMAS
Y SOLUCIONES

Contacto
Tel: +54 11 4342-5742
info@sistemasysoluciones.com
www.sistemasysoluciones.com